

Adults & Health Scrutiny Committee Falls Summary

December 2015

Better Care Fund

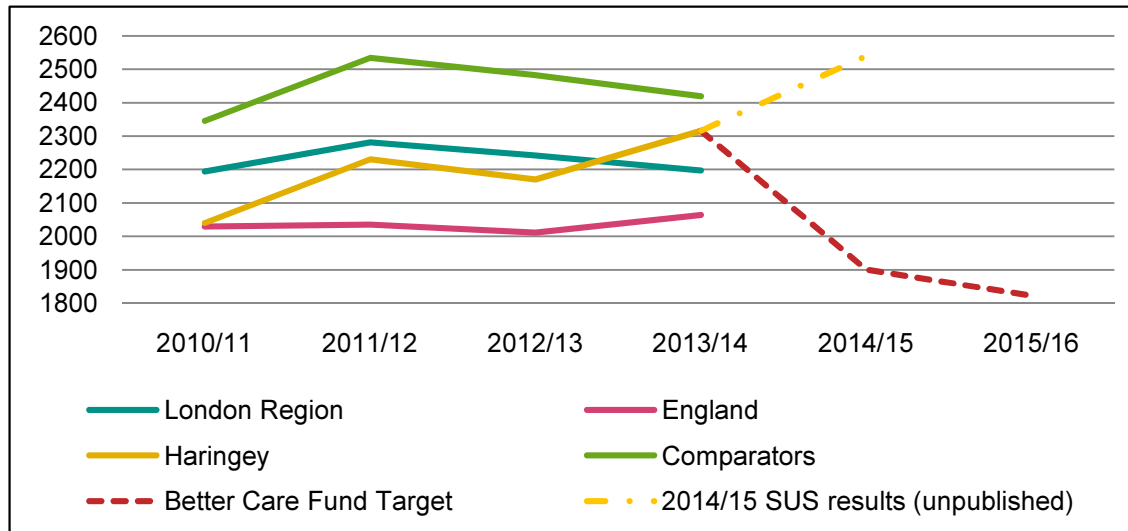
Business Intelligence

Haringey Council And Haringey Clinical Commissioning Group

9% Increase in Rate of Falls Related Injuries (65+) in Haringey (2013/14 to 14/15)

2

Better Care Fund



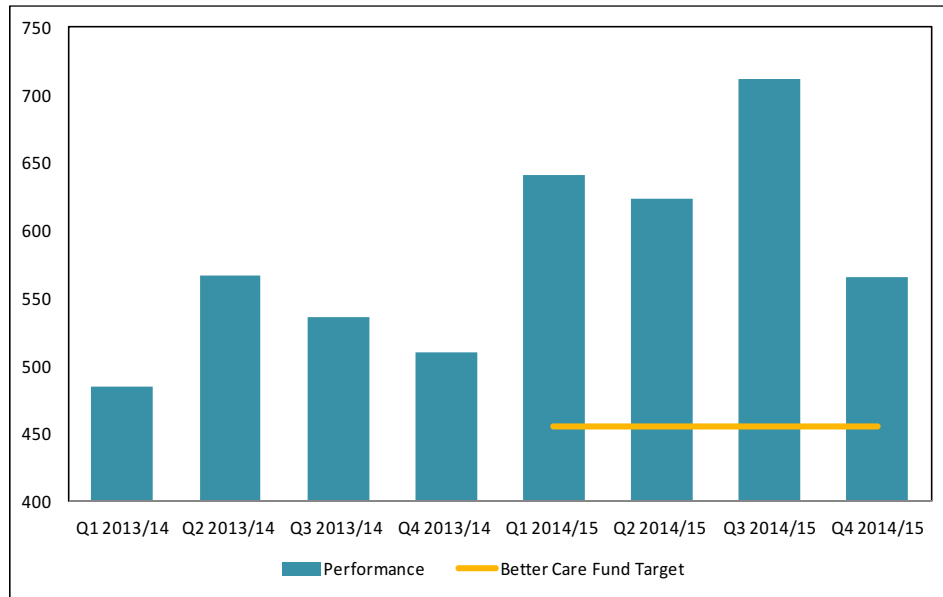
Public Health Outcomes Framework- Injuries due to falls 65+, standardised rate per 100,000 population

	2010/11	2011/12	2012/13	2013/14
Barking and Dagenham	2363	2615	2336	2027
Hackney and City	1814	2257	2389	2317
Lambeth	2306	2497	2626	2681
Lewisham	2223	2295	2205	2281
Southwark	2400	2753	2941	2770
Waltham Forest	2832	2761	2410	2376
Haringey	2040	2230	2171	2315

PH Outcomes framework – Injuries due to falls 65+, standardised rate per 100,000 pop - Comparators

- Public health Outcome results for 2014/15 has not yet been published.
- Data taken from SUS using the PH definition is initially showing a 9% growth (2540.28 per 100,000 population)
- The BCF target for 2014/15 was 1900 per population this will have been exceeded by 34% an additional 154 patients.
- BCF target currently amended to a 2.2% reduction in falls from 2014/15 baseline.
- Falls target is to be aligned to target in Value Based Commissioning (VBC) from early 2016 based on falls presenting to acute care in people aged over 75.

1125 Haringey Patients had a Non-Elective Admission for Falls.

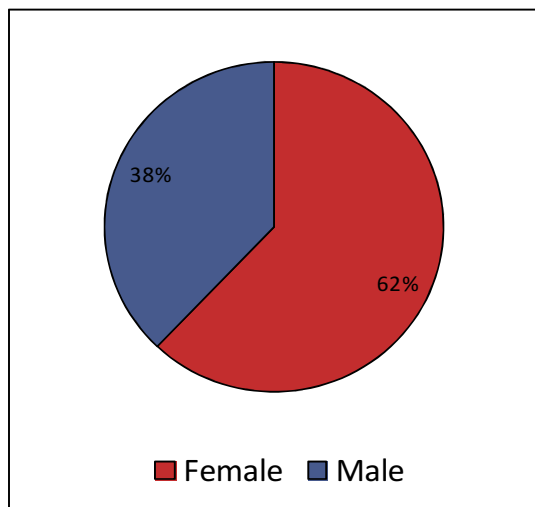


Falls per 100,000 population resulting in Hospital admission

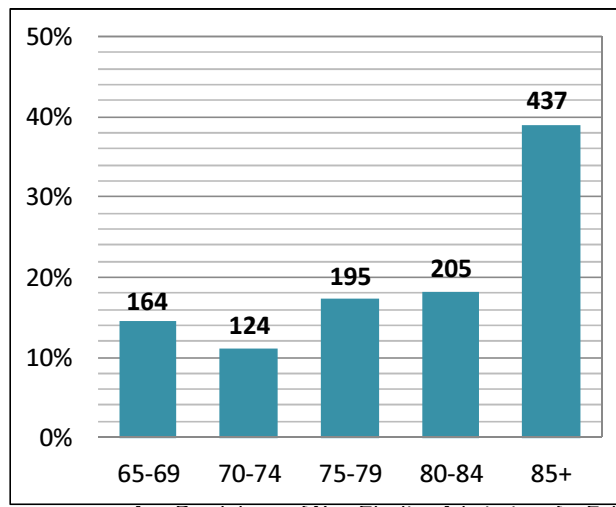
	2013/14	2014/15
April	38	53
May	49	53
June	40	47
July	54	50
August	36	48
September	40	51
October	37	50
November	47	63
December	51	57
January	42	41
February	32	57
March	46	43

- There was a 17% increase in the rate of non-elective admissions for falls (per 100,000 population) between 2013/14 and 2014/15.

Demographic breakdown of Falls related Non Elective Admissions



Gender of Non-Elective Admissions for Falls.



Age Breakdown of Non-Elective Admissions for Falls

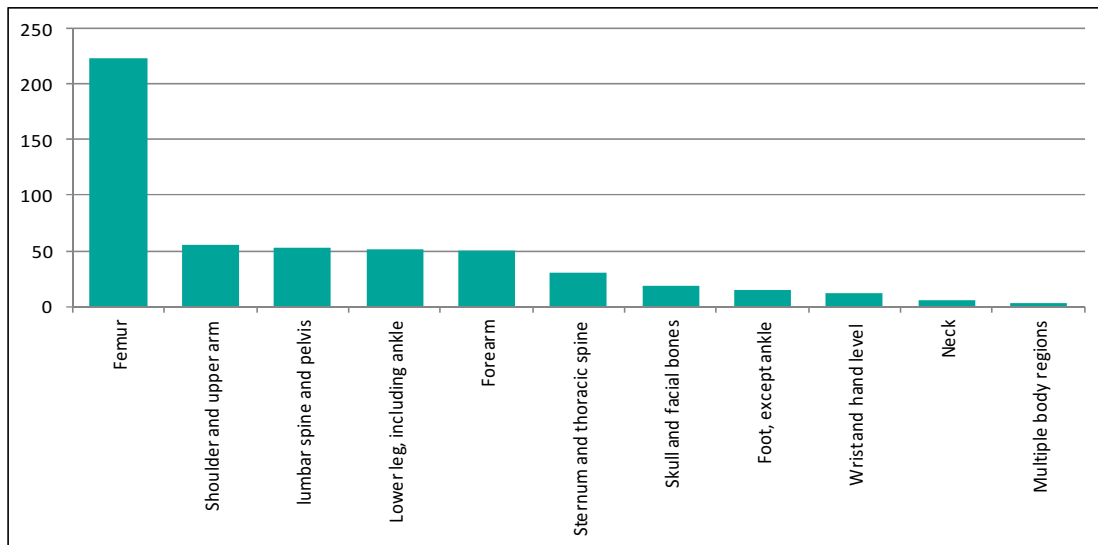
Collaborative	Non Elective Admissions
Central	161
North East	139
South East	143
West	519
Out of Borough	151

Practice	Collaborative	Non Elective admissions for falls 65+ Surgery population
Grosvenor Road Surgery	South East	7.23%
Allenson House Medical Centre	West	7.05%
High Road Surgery (Singh)	South East	6.74%
Dr Auk Raja	North East	6.52%
Highgate Group Practice	West	6.51%

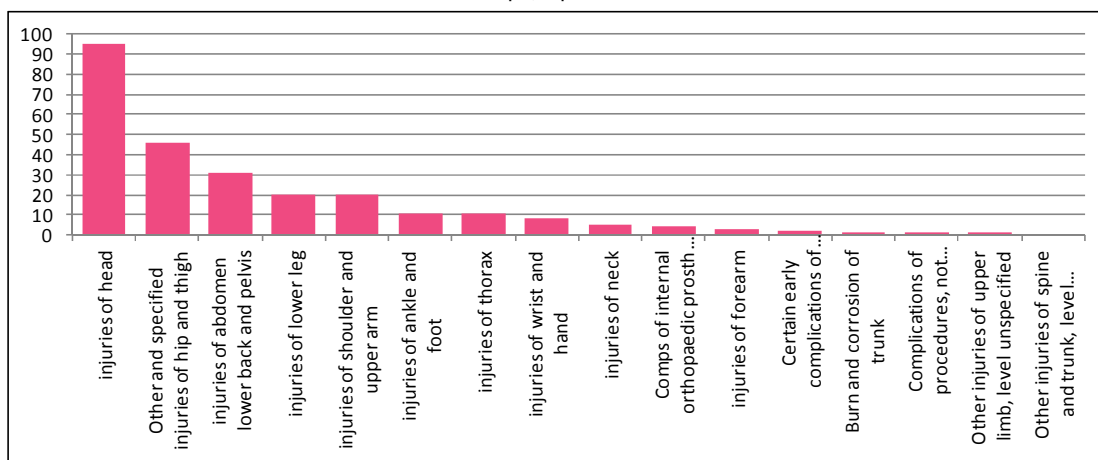
Top 5 rates of Non-Elective admissions for falls related injuries

- Falls are mainly happening to women over 85 in the west of the borough. There are fewer admissions in the Black/ African/ Caribbean/ British Ethnicity group.

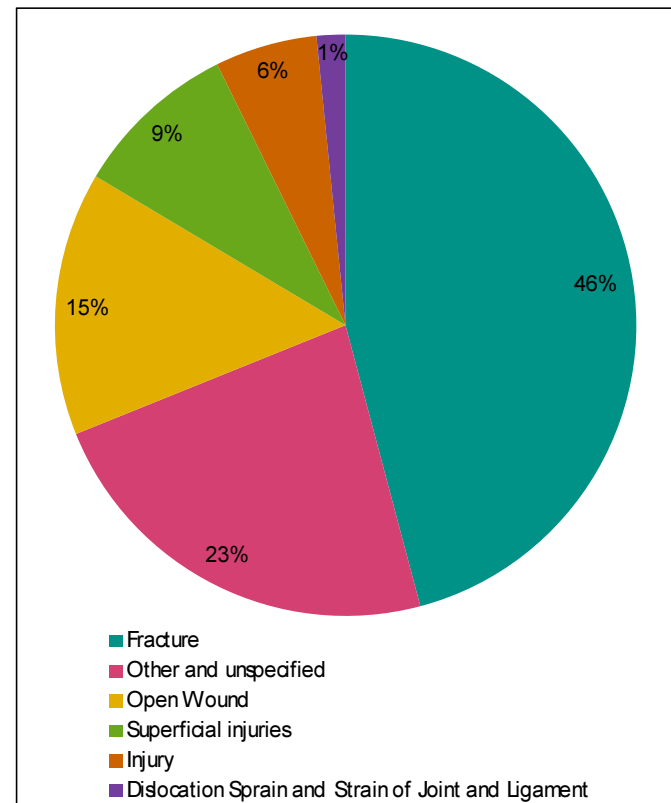
Fractures made up 46% of falls related Non Elective admissions (65+).



PHE -Slips, trips and falls definition Non Elective Admissions - fractures.

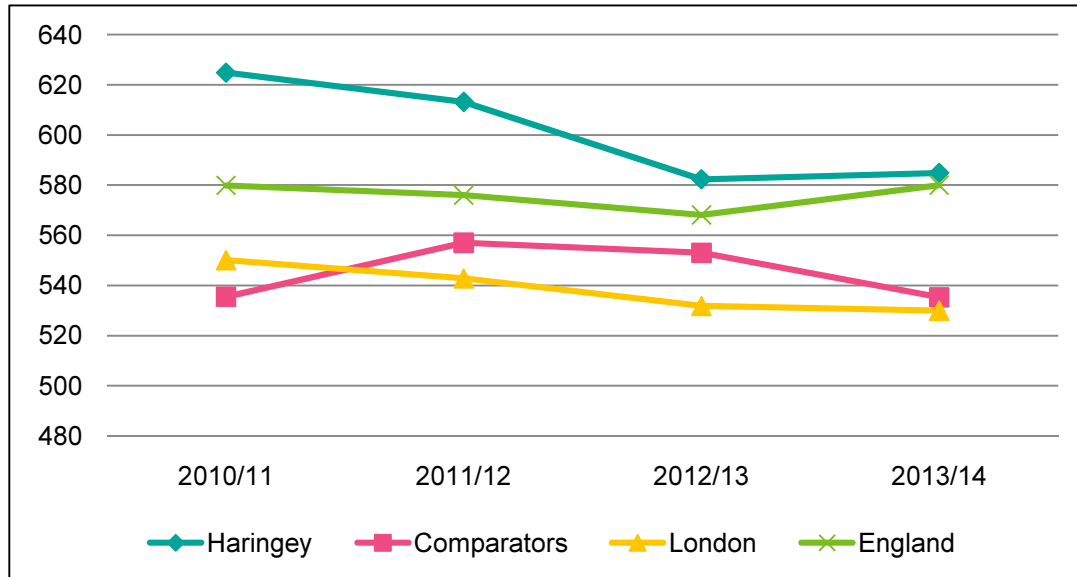


PHE -Slips, trips and falls definition Non Elective Admissions -Other and unspecified.



Non-Elective Admissions for Falls related injuries by description

6% reduction in rate of hip fractures (over 65's) in Haringey between 2010/11 and 2013/14.

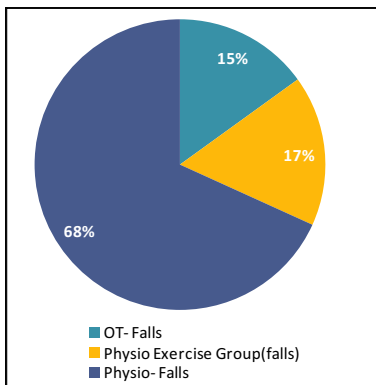


Public Health Outcomes Framework - Hip fractures in people aged 65 and over per 100,000 population

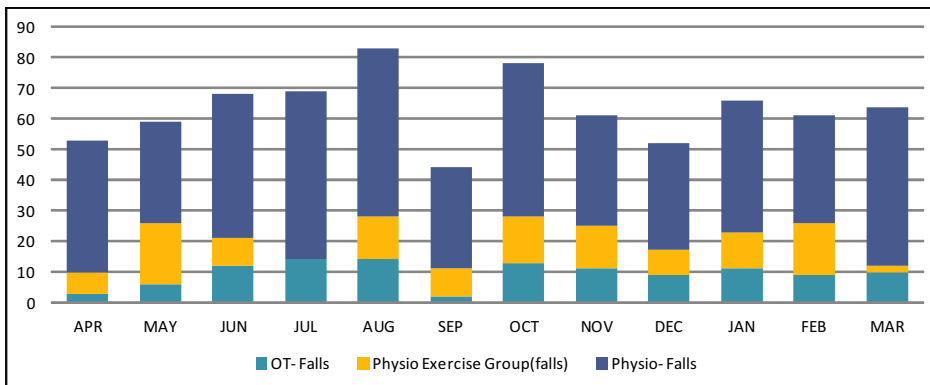
Public Health Outcomes Framework data shows that between 2010/11 and 2013/14 Haringey had the Highest rate of Hip Fractures above, the Comparator Group, London and England.

Haringey has seen the largest reduction in Hip Fractures per 100,000 population (6.4%) between 2010/11 and 2013/14. This has notably reduced the rate which is now in line with England's rate.

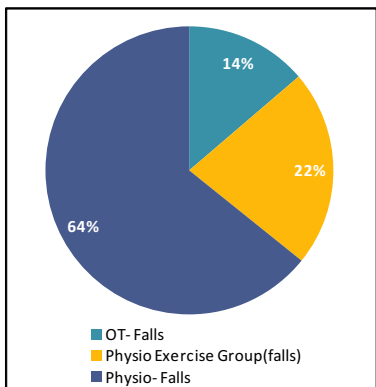
1568 Referrals made to the ICTT Falls prevention programmes.



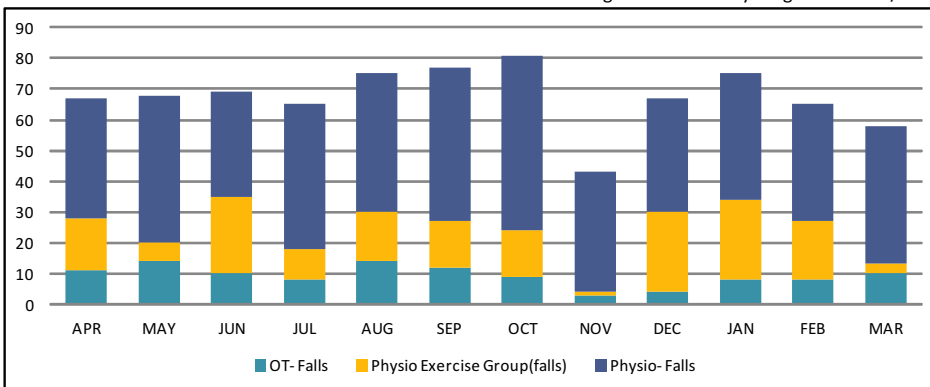
ICTT Falls Programmes 2013/14



Referrals to Whittington ICTT Team by Programme 2013/14



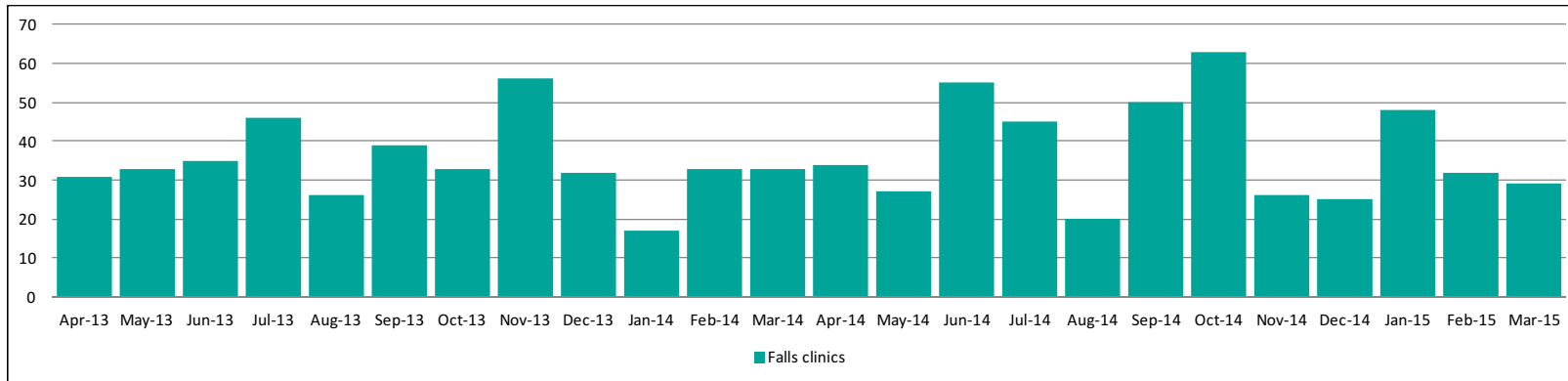
ICTT Falls Programmes 2014/15



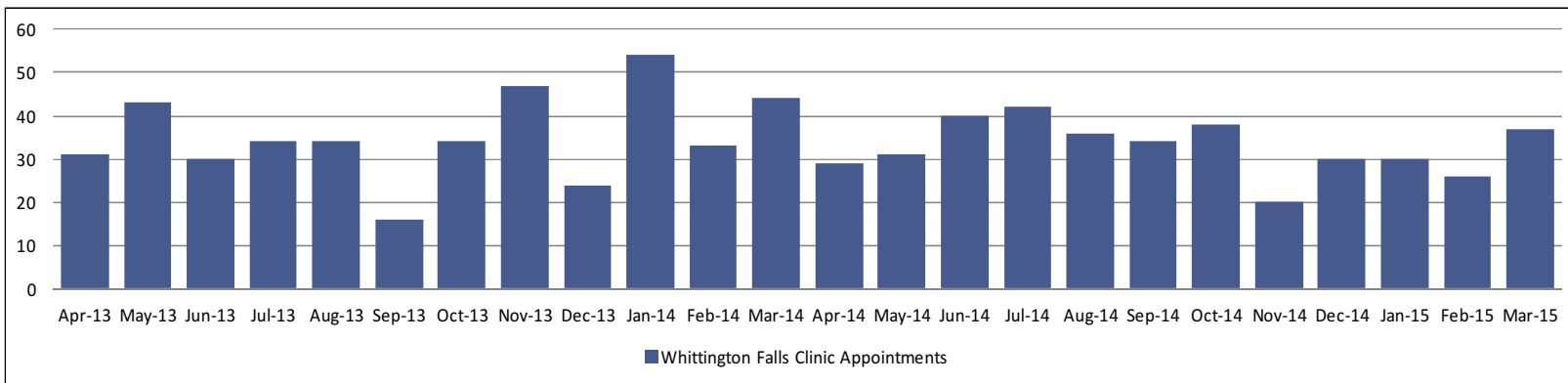
Referrals to Whittington ICTT Team by Programme 2014/15

- There was a 7% increase in referrals to the Integrated Community Therapy Team between 2013/14 and 2014/15 (52 additional referrals).
- The Physio-Exercise Group had a growth of 41% year on year (an additional 52 referrals).
- The OT falls programme had a reduction of 3 patients between 2013/14 and 2014/15.
- The Physio Falls programme had an increase of 3 patients between 2013/14 and 2014/15.

868 appointments at North Middlesex falls clinic and 817 appointments at Whittington.



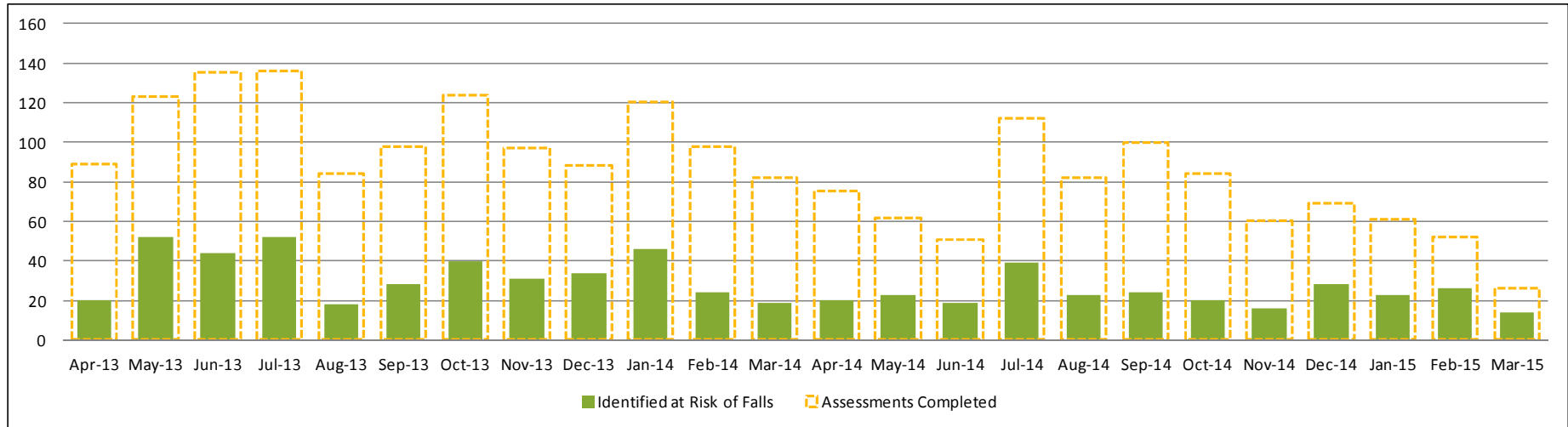
North Middlesex Falls Clinic Patients 2013/14 and 2014/15



Whittington Falls Clinic Patients 2013/14 and 2014/15

- Both North Middlesex and Whittington have 2 falls clinics per week.
- From 2013/14 to 14/15 there was a 10% increase in patients at North Middlesex and a 7.3% reduction in patients at Whittington.

683 Social Care clients identified as at risk of falls.



Number of Social Care Assessments completed at risk of Falls

- 2108 AMD (Adults Multi-disciplinary assessment) Assessments completed between April 2013 and March 2015.
- 683 clients (32%) of clients were identified at risk of falls.
- 366 clients identified at Risk of falls received housing adaptations or equipment. The main ones being major adaptations (eg level access shower, wet room, stair lift), minor adaptations (grab rail, stair rail, chair raiser) and bedroom/bathroom equipment.
- 309 clients identified at risk of falls received a Reablement Service.

Response – Initial Themes

1. Continue to monitor the balance and strength exercise group
2. Continue to ensure that people at risk of a non-elective admission due to falls are supported by the Locality Team, particularly in the West
3. Review the evidence base regarding the use of falls prevention information resources in primary care
4. Explore the linkage of the falls pathway to hospital discharge
5. Explore the development of a fracture liaison service for Haringey

The falls actions will be incorporated into the work programme of the Integration Implementation Group who will monitor their implementation.